





Course 1  
 Start, A, B, C, D, E, F, G, H, I,  
 B, C, D, E, F, G, H, A, Finish  
 Leave 1st A to port and all other marks  
 to starboard including A 2nd time

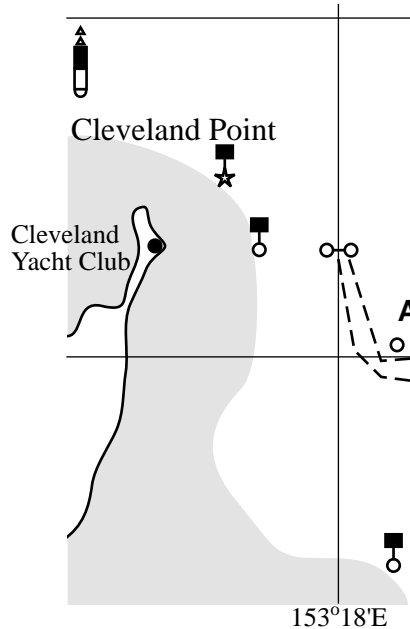
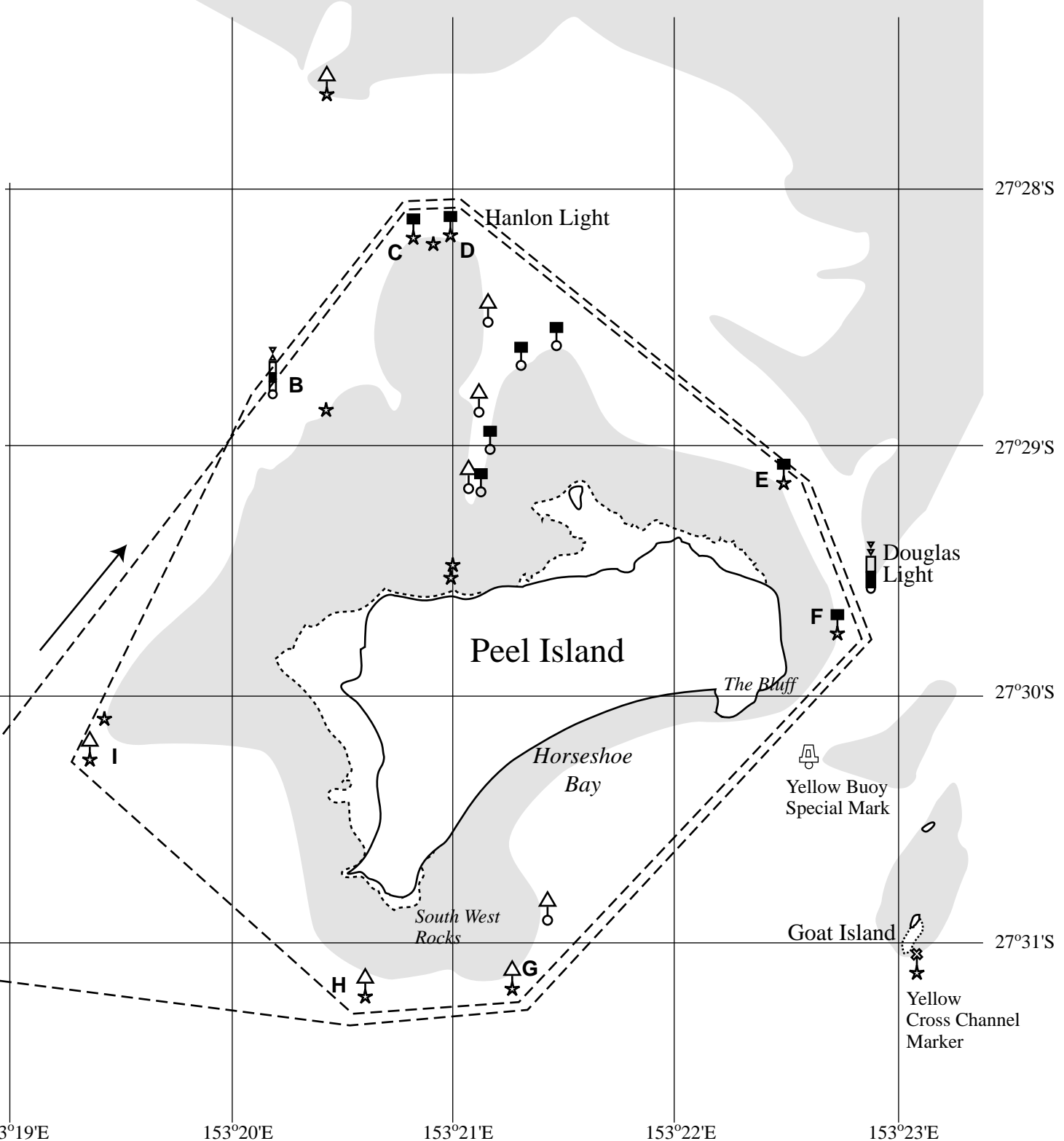
Length approx 38km (20.5nm)

Approx Location of Marks:

B	27°28.8S	153°20.2E
C	27°28.2S	153°20.8E
D	27°28.1S	153°21.0E
E	27°29.1S	153°22.5E
F	27°29.8S	153°22.7E
G	27°31.2S	153°21.3E
H	27°31.2S	153°20.6E
I	27°30.3S	153°19.4E

LEGEND

-  Shallow Water
-  Cardinal Markers &
-  Starboard & Port Markers
-  Orange Buoy laid by CYC



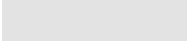
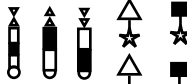
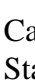
Course 2  
 Start, A, H, G, F, E, D, C, B, I,  
 H, G, F, E, D, C, B, A, Finish  
 Leave 1st A to starboard and all other  
 marks to port including A 2nd time

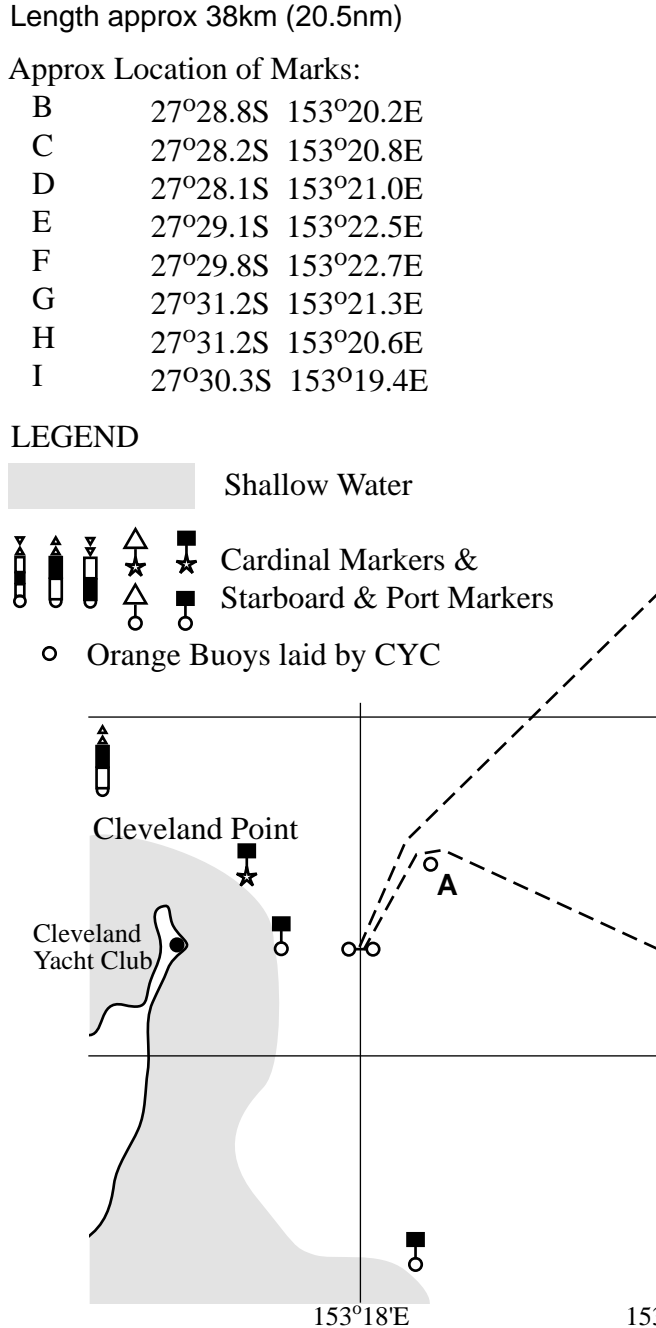
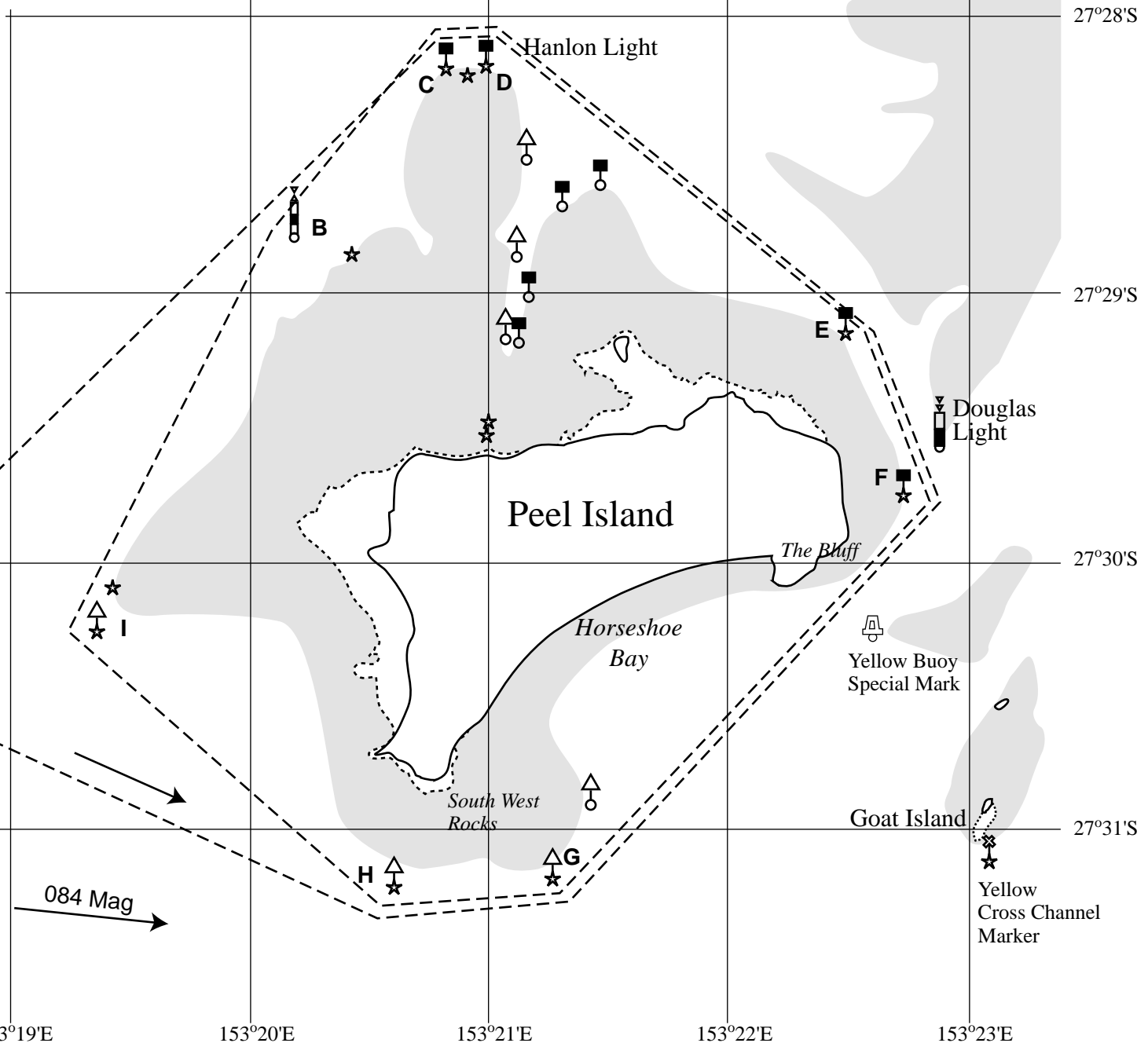
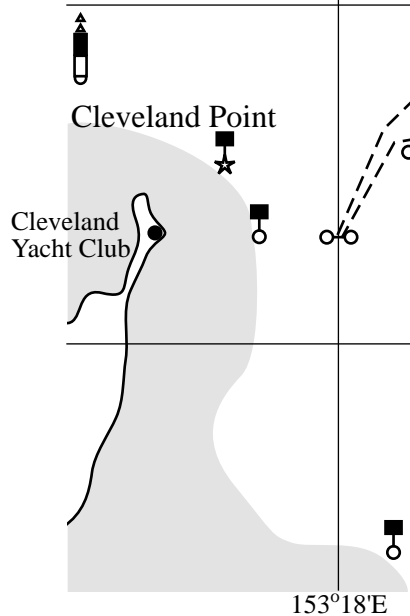
Length approx 38km (20.5nm)

Approx Location of Marks:

B	27°28.8S	153°20.2E
C	27°28.2S	153°20.8E
D	27°28.1S	153°21.0E
E	27°29.1S	153°22.5E
F	27°29.8S	153°22.7E
G	27°31.2S	153°21.3E
H	27°31.2S	153°20.6E
I	27°30.3S	153°19.4E

LEGEND

-  Shallow Water
-  Cardinal Markers &  
Starboard & Port Markers
-  Orange Buoy laid by CYC







### Course 3

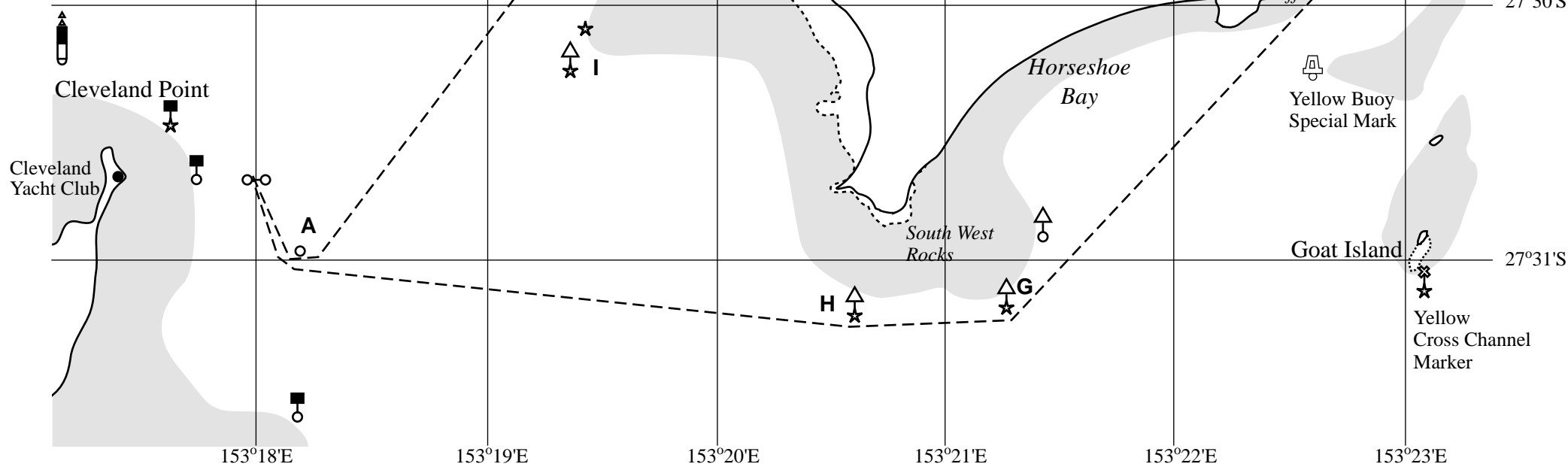
Start, A, B, C, D, E, F, G, H, A, Finish  
 Leave 1st A to port and all other marks  
 to starboard including A 2nd time  
 Length approx 21km (11.3nm)

#### Approx Location of Marks:

B	27°28.8S	153°20.2E
C	27°28.2S	153°20.8E
D	27°28.1S	153°21.0E
E	27°29.1S	153°22.5E
F	27°29.8S	153°22.7E
G	27°31.2S	153°21.3E
H	27°31.2S	153°20.6E
I	27°30.3S	153°19.4E

#### LEGEND

-  Shallow Water
-  Cardinal Markers &
-  Starboard & Port Markers
-  Orange Buoy laid by CYC




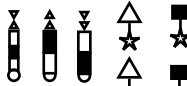

Course 4

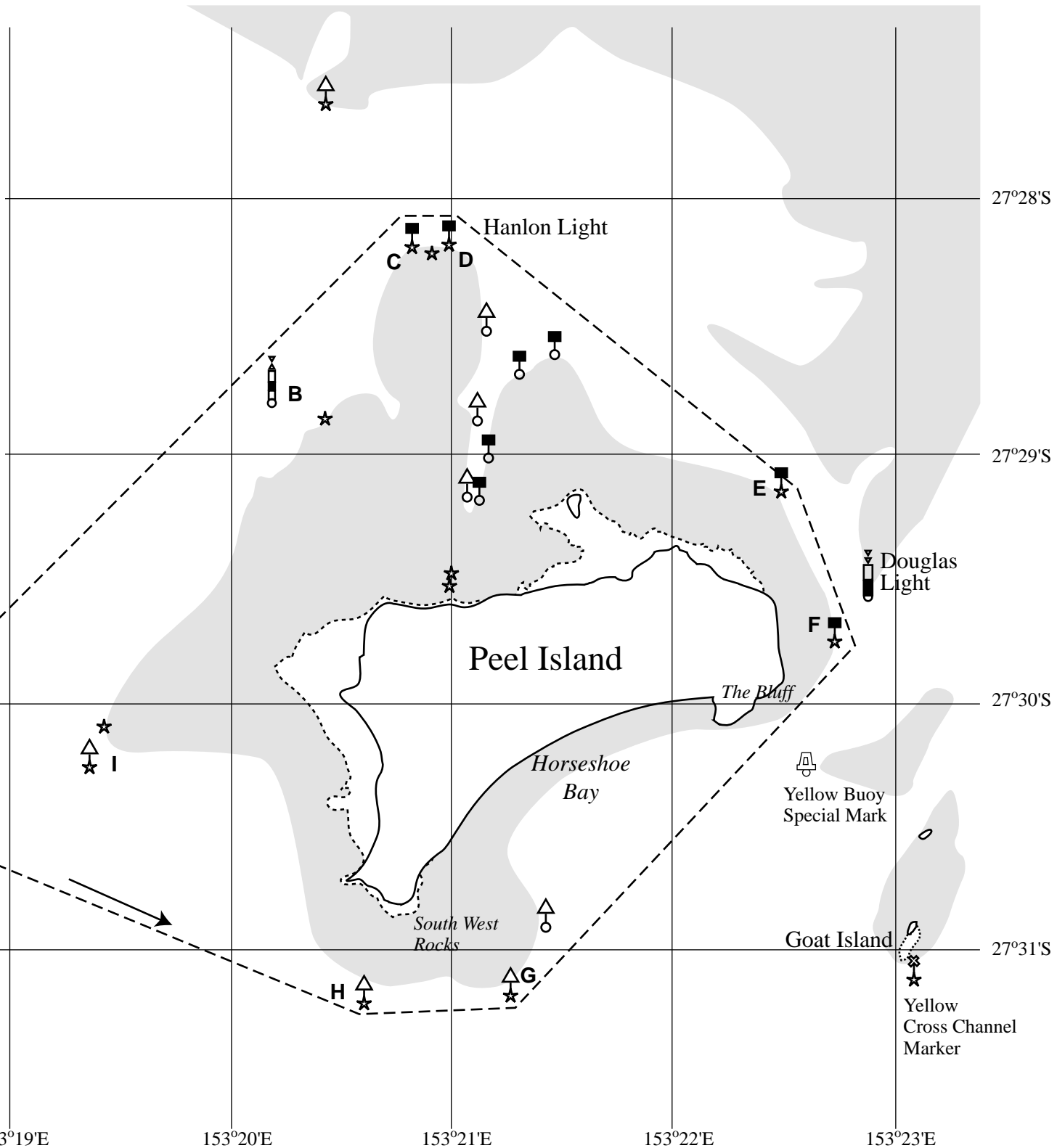
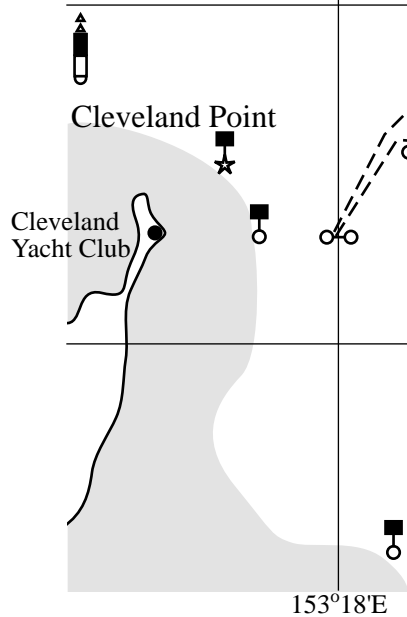
Start, A, H, G, F, E, D, C, B, A, Finish  
 Leave 1st A to starboard and all other  
 marks to port including A 2nd time  
 Length approx 21km (11.3nm)

Approx Location of Marks:

B	27°28.8S	153°20.2E
C	27°28.2S	153°20.8E
D	27°28.1S	153°21.0E
E	27°29.1S	153°22.5E
F	27°29.8S	153°22.7E
G	27°31.2S	153°21.3E
H	27°31.2S	153°20.6E
I	27°30.3S	153°19.4E

LEGEND

-  Shallow Water
-  Cardinal Markers &  
Starboard & Port Markers
-  Orange Buoy laid by CYC



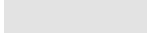
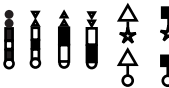

Course 5  
 Start, A, B, D, E, F, G, H, A, Finish  
 Leave 1st A to port and all other marks  
 to starboard including A 2nd time

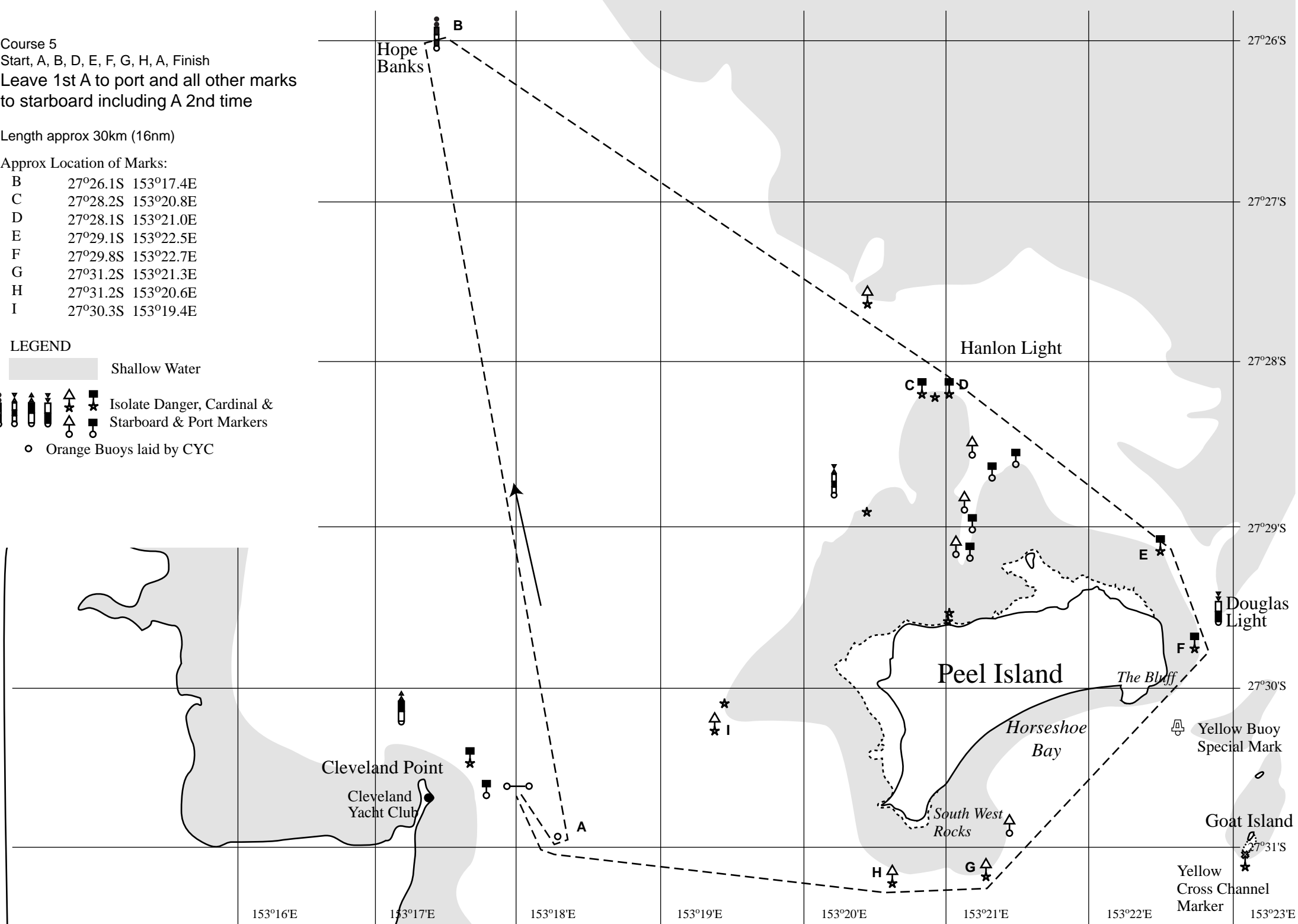
Length approx 30km (16nm)

Approx Location of Marks:

B	27°26.1S	153°17.4E
C	27°28.2S	153°20.8E
D	27°28.1S	153°21.0E
E	27°29.1S	153°22.5E
F	27°29.8S	153°22.7E
G	27°31.2S	153°21.3E
H	27°31.2S	153°20.6E
I	27°30.3S	153°19.4E

LEGEND

-  Shallow Water
-  Isolate Danger, Cardinal & Starboard & Port Markers
-  Orange Buoys laid by CYC



Course 6  
 Start, A, H, G, F, E, D, B, Finish  
 Leave 1st A to starboard and all other  
 marks to port




Length approx 30km (16nm)


Approx Location of Marks:

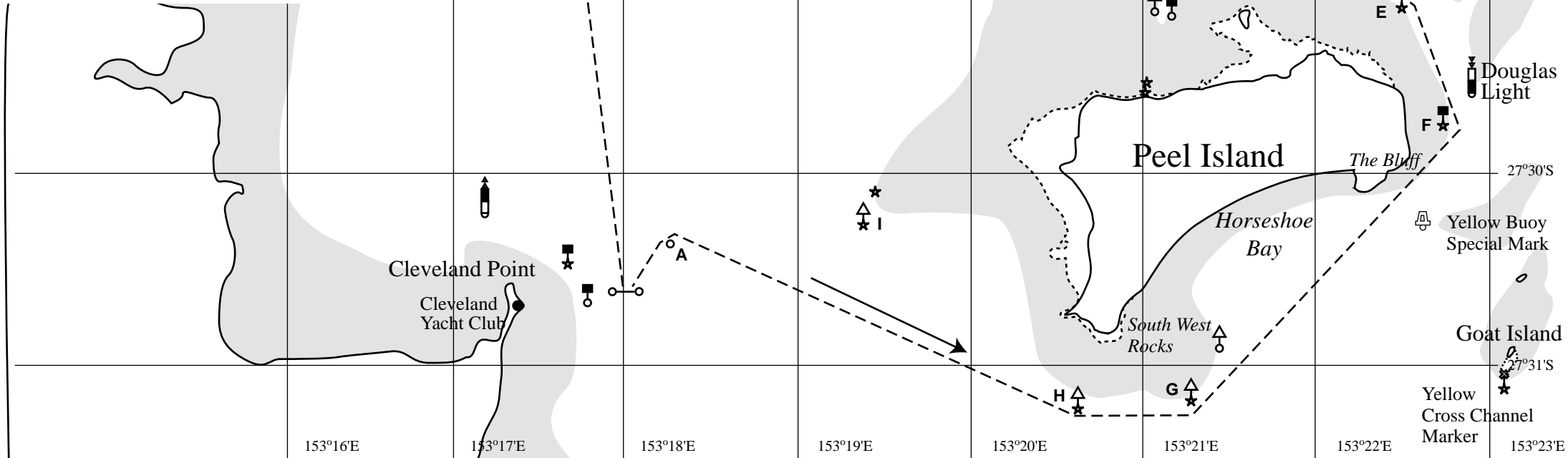
B	27°26.1S	153°17.4E
C	27°28.2S	153°20.8E
D	27°28.1S	153°21.0E </td
E	27°29.1S	153°22.5E
F	27°29.8S	153°22.7E
G	27°31.2S	153°21.3E
H	27°31.2S	153°20.6E
I	27°30.3S	153°19.4E

LEGEND

 Shallow Water

     Isolate Danger, Cardinal & Starboard & Port Markers

 Orange Buoys laid by CYC



Hope Banks

B

27°26'S

27°27'S

27°28'S

27°29'S

27°30'S

27°31'S

153°16'E

153°17'E

153°18'E

153°19'E

153°20'E

153°21'E

153°22'E

153°23'E

Hanlon Light

C

D

E

F

Douglas Light

Peel Island

Horseshoe Bay

The Bluff

Yellow Buoy Special Mark

Cleveland Point

Cleveland Yacht Club

A

I

H

G

South West Rocks

Goat Island

Yellow Cross Channel Marker